



36 Foresters Lea Crescent, Dunfermline, KY12 7TE

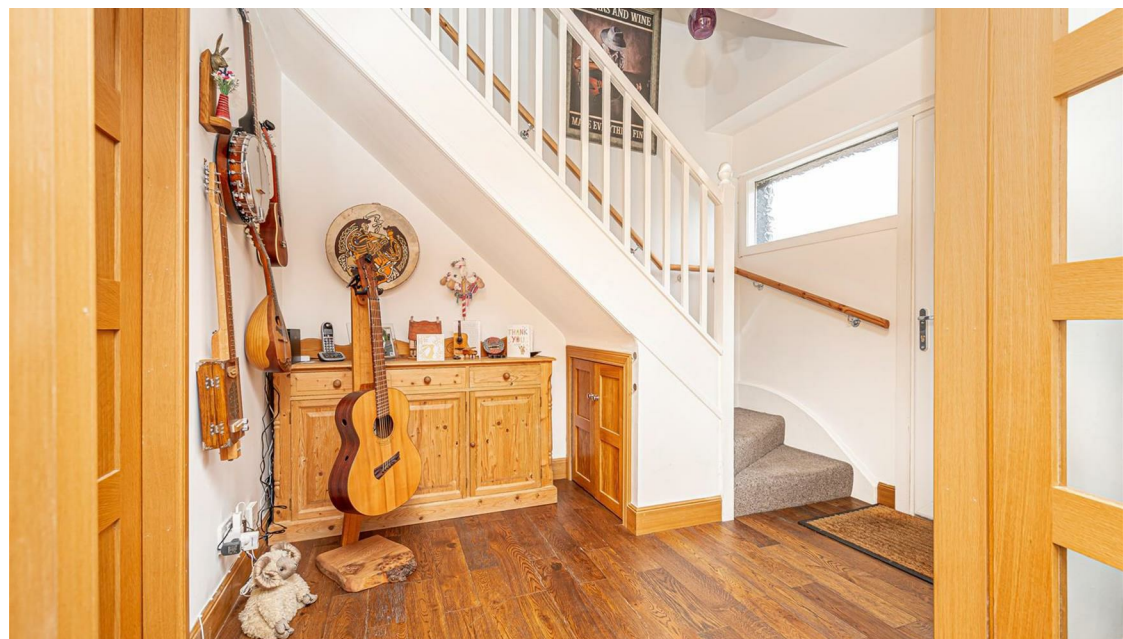
Offers Over £210,000

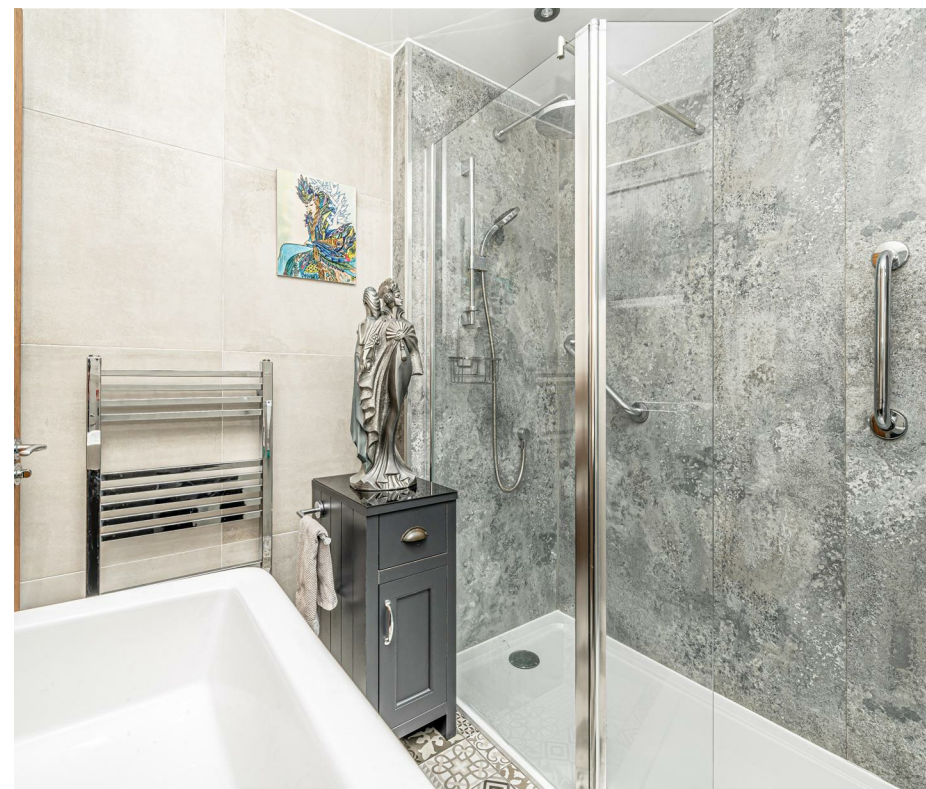






CLOSING DATE THURSDAY 18 APRIL 2024 @ 2PM Excellent family home in sought after location within Garvock Hill. This stylish and well presented three bedroom semi detached villa is generous throughout and has been upgraded with modern fixtures and fittings. It is well maintained and offered in move in condition. The accommodation briefly comprises entrance hall, shower room , lounge, dining kitchen and features conservatory. On the upper level there are two double bedrooms and single room. Access to attic. The double driveway leads to detached tandem garage and and lovely gardens to front and rear fully enclosed providing a child and pet safe environment with patio area. The subjects are double glazed with gas central heating.





LOCATION

The ancient capital of Dunfermline won its bid to have official city status in May 2022, as part of the civic honour's competition to celebrate the Queen's platinum jubilee. The City of Dunfermline is of considerable historic interest and is the resting place of King Robert the Bruce. Carnegie's Birthplace museum, the Abbey and Abbot House reflect the historic interest of the city, whilst recent developments have seen Dunfermline move into the modern era with Carnegie Museum and Library. Dunfermline is located approximately five miles from the Forth bridges and is therefore particularly popular with commuters to Edinburgh and many parts of the central belt with easy access to the M90 motorway with its direct links to Edinburgh, Perth and Dundee and across the Kincardine Bridge by way of motorways to Stirling, Glasgow and the West. It benefits from a full range of shops, social and leisure facilities and educational establishments. The local railway stations provide a regular service to Edinburgh with intercity links to other parts of the UK. There are regular and convenient bus services both local and national.

EXTRAS INC. IN SALE /AGENTS NOTE

All floor coverings, blinds, bathroom and integrated appliances. The client will be removing the two hall light fittings and master bedroom light fitting and replacing these with standard fittings.

From 1st February 2022, residential properties in Scotland are required by law to have installed a system of inter-linked smoke alarms, carbon monoxide detectors and heat detectors (the "inter-linked system"). No warranty is given that any interlinked system has been installed in this property and interested parties should make their own enquiries.









This floor plan is for illustrative and marketing purposes only and is to be used as a guide only. No details are guaranteed on measurements, floor areas, or orientation and do not form any agreement. No liability is taken for error, omission or misstatement. A party must rely upon its own inspection(s). Created by 9AM Media



SOLICITORS | PROPERTY

33 East Port, Dunfermline, Fife, KY12 7JE

Tel: 01383 620222 Fax: 01383 621213

www.morganlaw.co.uk



eSpC

rightmove

Zoopla.co.uk

onTheMarket.com

s1homes.com

naeal | propertymark

PROTECTED

AGENTS NOTE These particulars do not form part of any contract and the statements or plans contained herein are not warranted nor to scale. Approximate measurements have been taken by electronic device at the widest point. Services and appliances have not been tested for efficiency or safety and no warranty is given as to their compliance with any Regulations. No movable items will be included in the sale.