

123 Headwell Avenue, Dunfermline, KY12 0JR
Offers In The Region £135,000

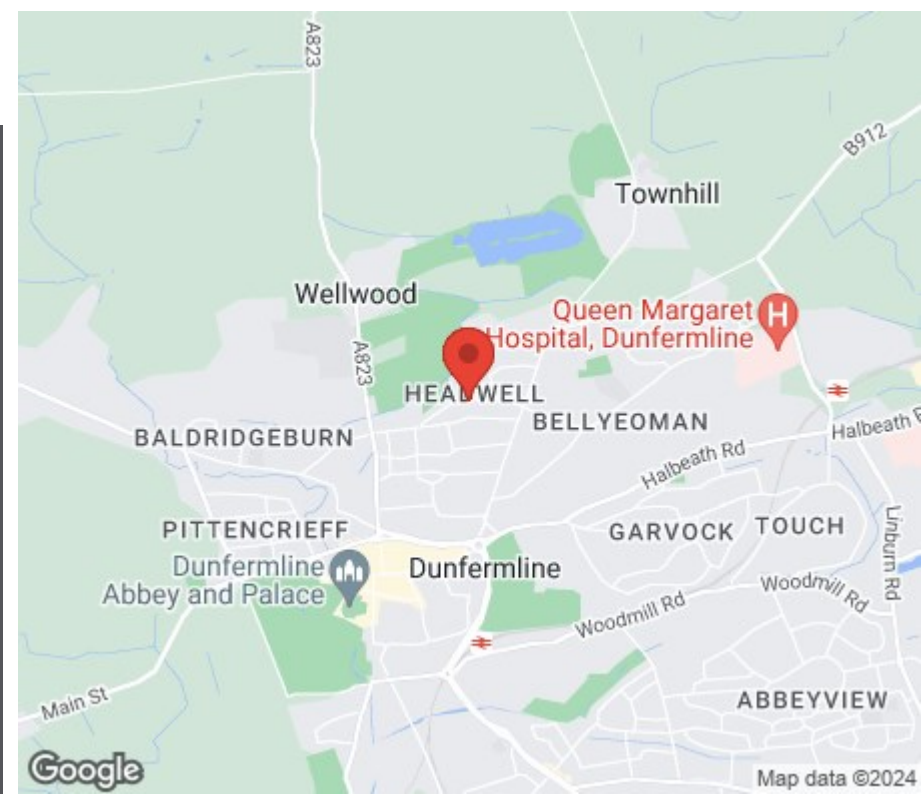
- 2 bedrooms
- 1 bathroom
- 1 living room
- 3+ other features





Excellent starter home or would suit small family with the benefit of off street parking with car port. There are easy to maintain gardens to front and rear. Ideally located within easy reach of Dunfermline City Centre and all amenities. The accommodation briefly comprises entrance vestibule with storage, lounge with space for table and chairs and fitted kitchen. On the upper level there are two double bedrooms with good storage and modern shower room. Access to attic. The rear gardens are enclosed with patio and seating areas. There is double glazing and gas central heating throughout.





LOCATION

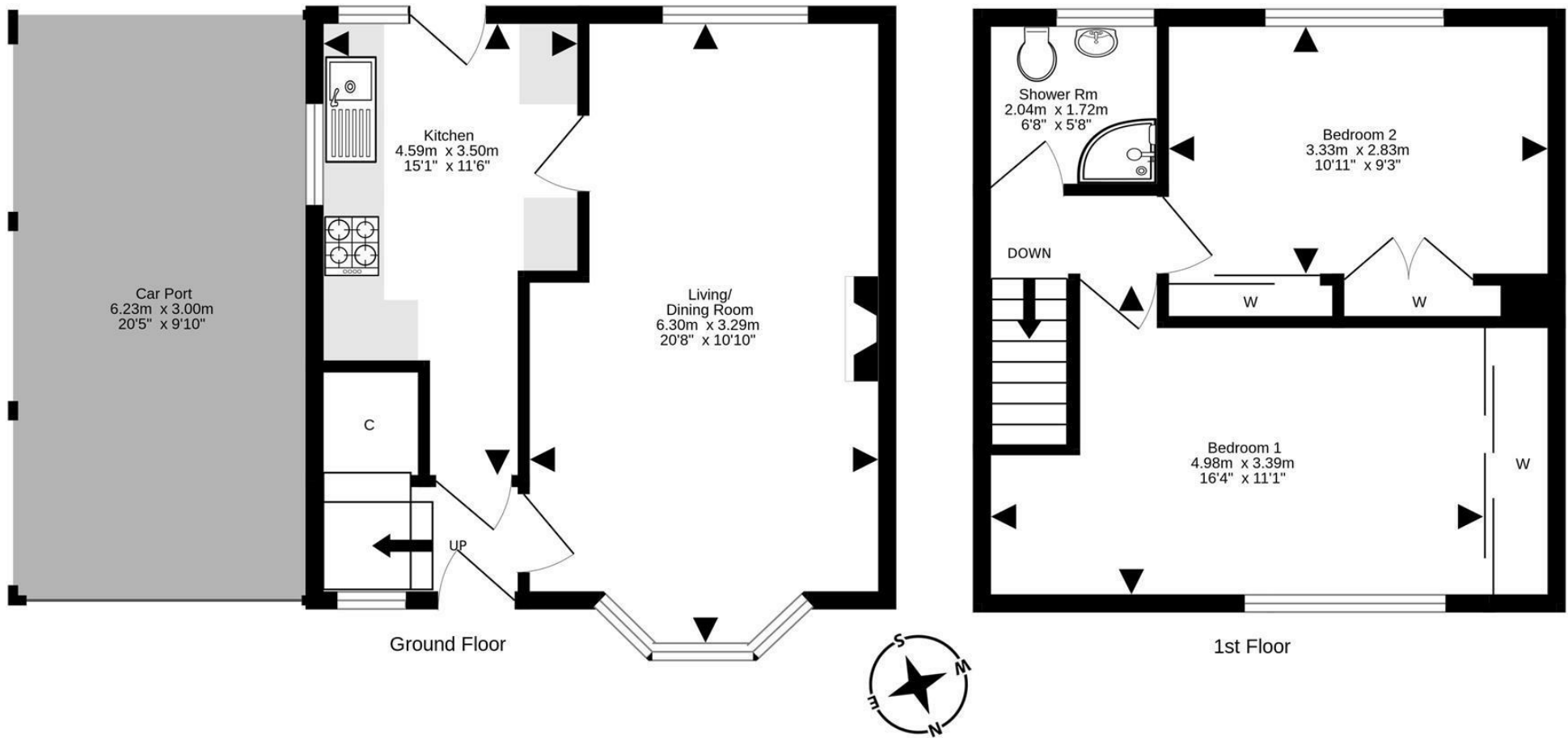
The ancient capital of Dunfermline won its bid to have official city status in May 2022, as part of the civic honour's competition to celebrate the Queen's platinum jubilee. The City of Dunfermline is of considerable historic interest and is the resting place of King Robert the Bruce. Carnegie's Birthplace museum, the Abbey and Abbot House reflect the historic interest of the city, whilst recent developments have seen Dunfermline move into the modern era with Carnegie Museum and Library. Dunfermline is located approximately five miles from the Forth bridges and is therefore particularly popular with commuters to Edinburgh and many parts of the central belt with easy access to the M90 motorway with its direct links to Edinburgh, Perth and Dundee and across the Kincardine Bridge by way of motorways to Stirling, Glasgow and the West. It benefits from a full range of shops, social and leisure facilities and educational establishments. The local railway stations provide a regular service to Edinburgh with intercity links to other parts of the UK. There are regular and convenient bus services both local and national.

EXTRAS INC. IN SALE / AGENTS NOTE

All floor coverings, blinds, bathroom and light fittings together with integrated appliances and garden shed.

From 1st February 2022, residential properties in Scotland are required by law to have installed a system of inter-linked smoke alarms, carbon monoxide detectors and heat detectors (the "inter-linked system"). No warranty is given that any interlinked system has been installed in this property and interested parties should make their own enquiries.





For details of the total internal floor area, please refer to the property's Home Report. This plan is for illustrative purposes only and should be used as such by a prospective purchaser. Made with Metropix ©2024

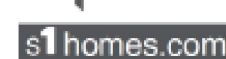


SOLICITORS | PROPERTY

33 East Port, Dunfermline, Fife, KY12 7JE

Tel: 01383 620222 Fax: 01383 621213

www.morganlaw.co.uk



AGENTS NOTE These particulars do not form part of any contract and the statements or plans contained herein are not warranted nor to scale. Approximate measurements have been taken by electronic device at the widest point. Services and appliances have not been tested for efficiency or safety and no warranty is given as to their compliance with any Regulations. No movable items will be included in the sale.