

Morgans

PROPERTY

5 Carnegie Apartments, Dunfermline, KY12 7AE

Offers In The Region £295,000

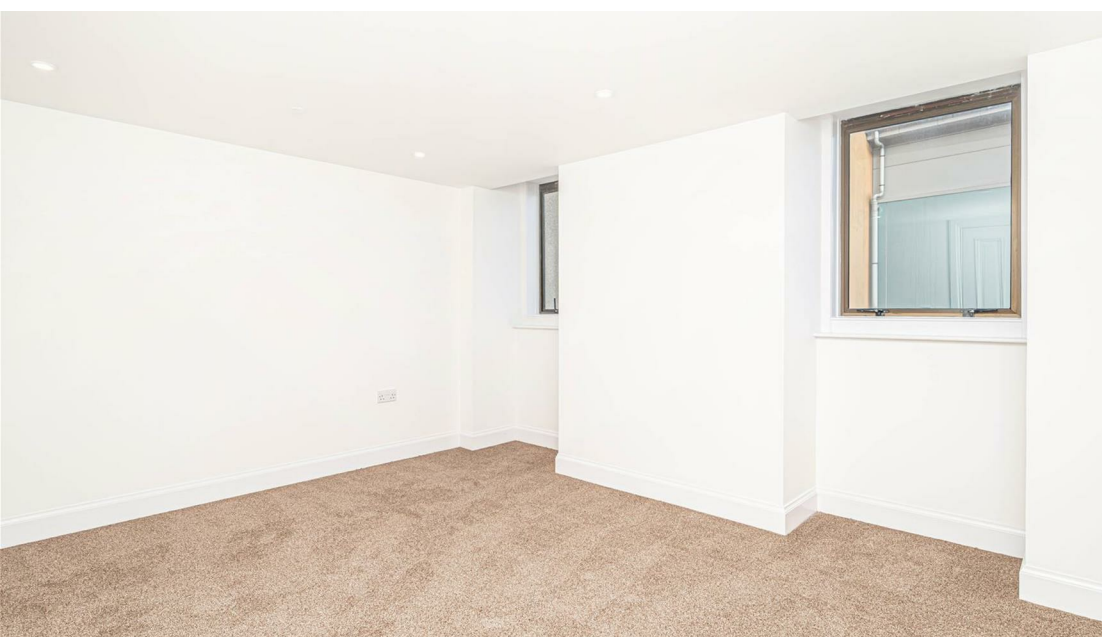






The Carnegie Apartments is a stunning development in one of Dunfermline's most iconic buildings circa 1912. Situated in the heart of the city centre with excellent access to all local amenities and a short walk to local transport links. The developers have undertaken a complete renovation of eighteen bespoke executive apartments, finished to the highest of standards making contemporary and stylish homes, yet retaining character and charm throughout, with retained period features which are rare in a development of this size. The standard of fixtures and fittings are to the highest specification bringing luxury living to the next level. This is the last apartment being marketed. Internal viewing is a must to appreciate this stunning apartment.

Apartment 5 is a ground floor maisonette over two levels with mezzanine. The accommodation comprises secure entry leading into the impressive communal reception area. A private entrance leads into entrance hallway with understair storage. A spacious open plan lounge and kitchen provides ample natural light due to the fabulous window formation. A stylish German made fitted kitchen benefits from Siemens built-in oven microwave and fridge freezer. There is also an induction hob as well as quartz worktops and upstands. One of the design features is a concealed utility room with space for a washer, dishwasher, dryer and walk-in storage. There is underfloor heating throughout the ground floor and all bathrooms/en-suites are complimented by high end fixtures and fittings which are fully tiled with wall hung w.c and vanity units. Retaining a period feel, the ground floor has been designed to incorporate corncicing. A double bedroom on the ground floor is complimented with Jack & Jill en-suite facilities. There are ample electric outlets including pre-wiring for wall mounted televisions and pre-wiring for electric window blinds. On the upper level is the mezzanine landing which could be used as a further bedroom or office space with en-suite, further double bedroom with a built-in wardrobe and luxury En-suite bathroom with integrated T.V. This apartment has two private parking spaces.





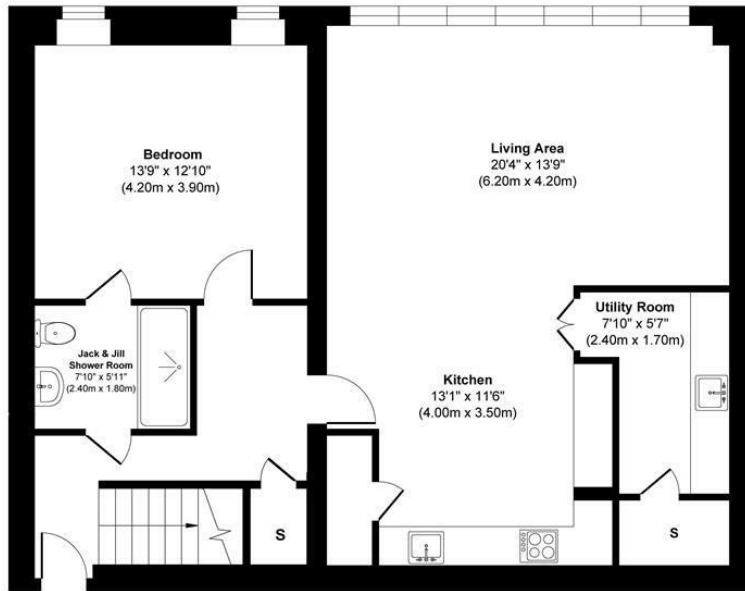
LOCATION

The ancient capital of Dunfermline won its bid to have official city status in May 2022, as part of the civic honour's competition to celebrate the Queen's platinum jubilee. The City of Dunfermline is of considerable historic interest and is the resting place of King Robert the Bruce. Carnegie's Birthplace museum, the Abbey and Abbot House reflect the historic interest of the city, whilst recent developments have seen Dunfermline move into the modern era with Carnegie Museum and Library. Dunfermline is located approximately five miles from the Forth bridges and is therefore particularly popular with commuters to Edinburgh and many parts of the central belt with easy access to the M90 motorway with its direct links to Edinburgh, Perth and Dundee and across the Kincardine Bridge by way of motorways to Stirling, Glasgow and the West. It benefits from a full range of shops, social and leisure facilities and educational establishments. The local railway stations provide a regular service to Edinburgh with intercity links to other parts of the UK. There are regular and convenient bus services both local and national.

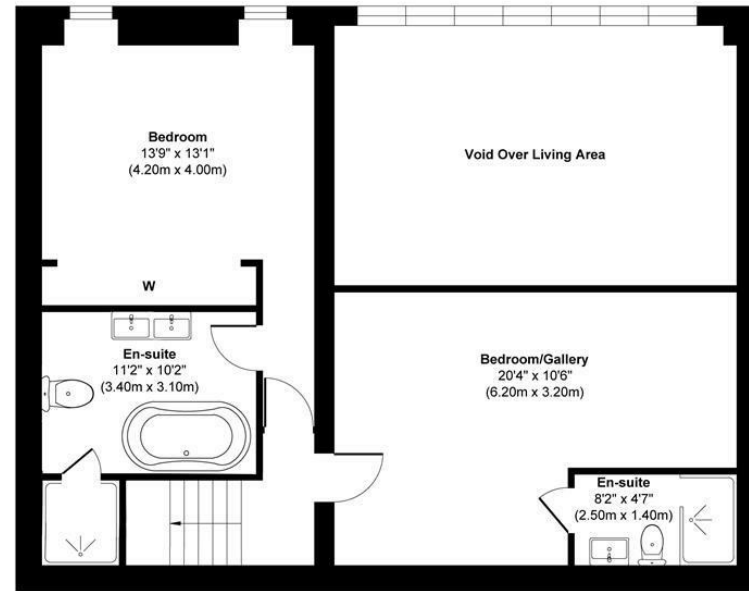








Ground Floor



First Floor



This floor plan is for illustrative and marketing purposes only and is to be used as a guide only. No details are guaranteed on measurements, floor areas, or orientation and do not form any agreement. No liability is taken for error, omission or misstatement. A party must rely upon its own inspection(s). Created by 9AM Media



SOLICITORS | PROPERTY

33 East Port, Dunfermline, Fife, KY12 7JE

Tel: 01383 620222 Fax: 01383 621213

www.morganlaw.co.uk



eSpC

rightmove

Zoopa.co.uk

onTheMarket.com

s1homes.com

naea | propertymark

PROTECTED

AGENTS NOTE These particulars do not form part of any contract and the statements or plans contained herein are not warranted nor to scale. Approximate measurements have been taken by electronic device at the widest point. Services and appliances have not been tested for efficiency or safety and no warranty is given as to their compliance with any Regulations. No movable items will be included in the sale.